











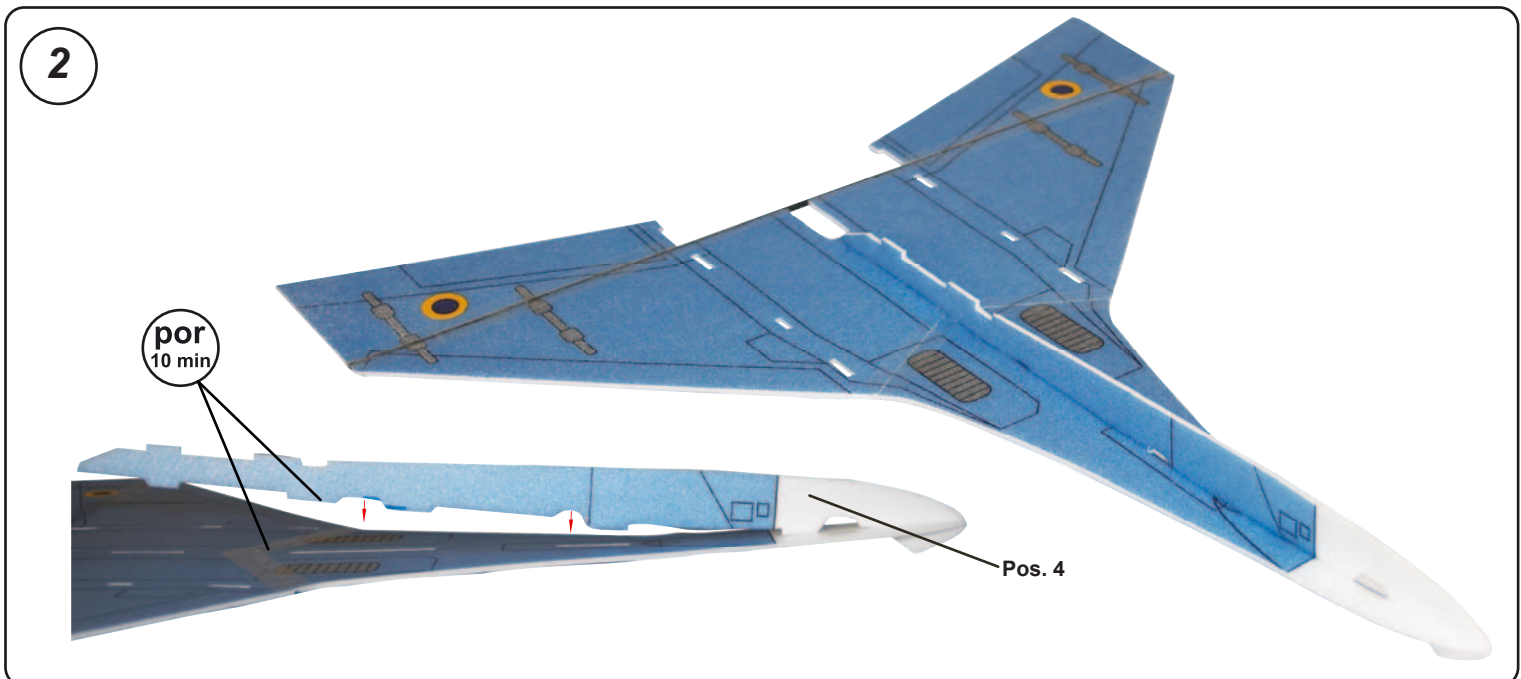
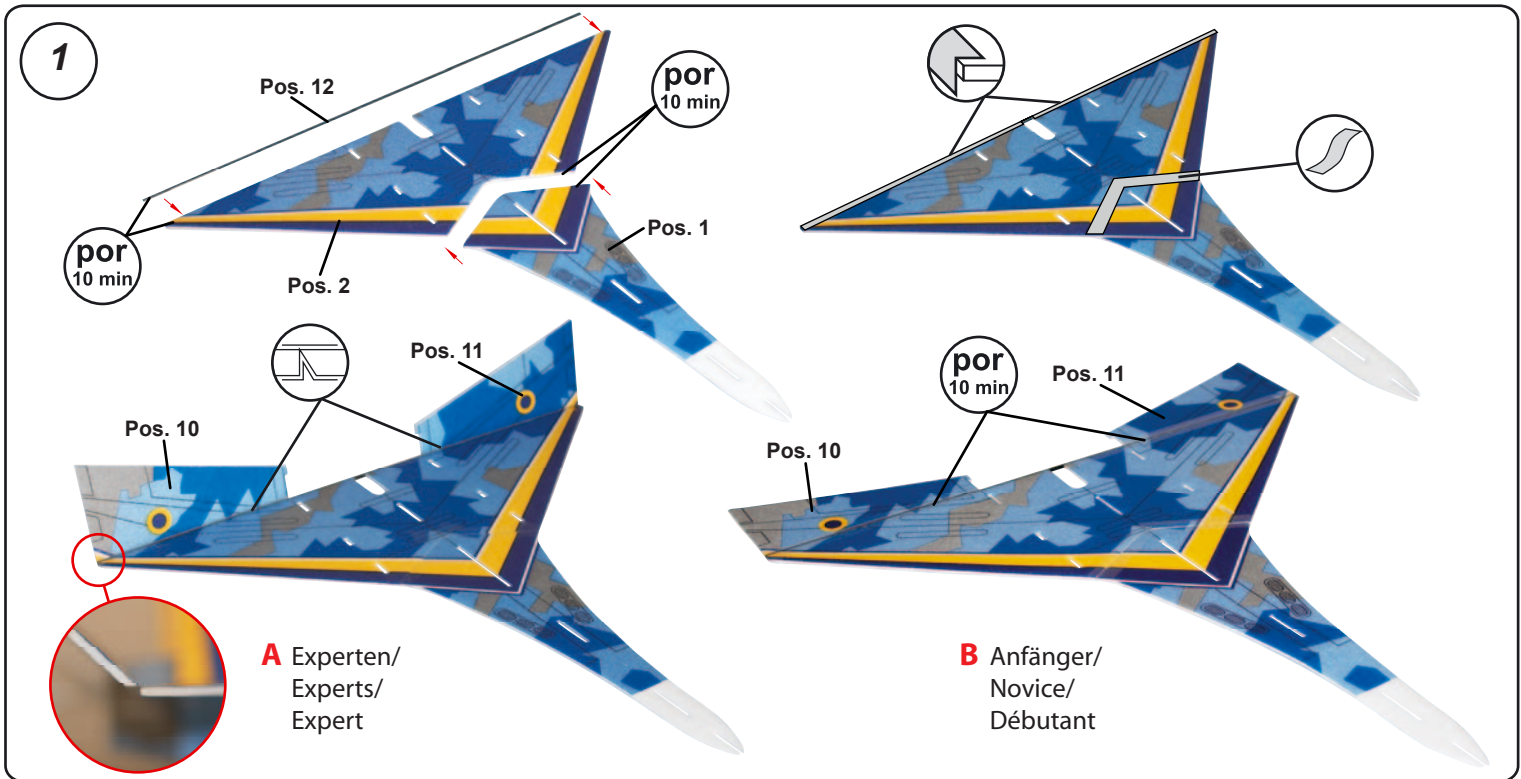
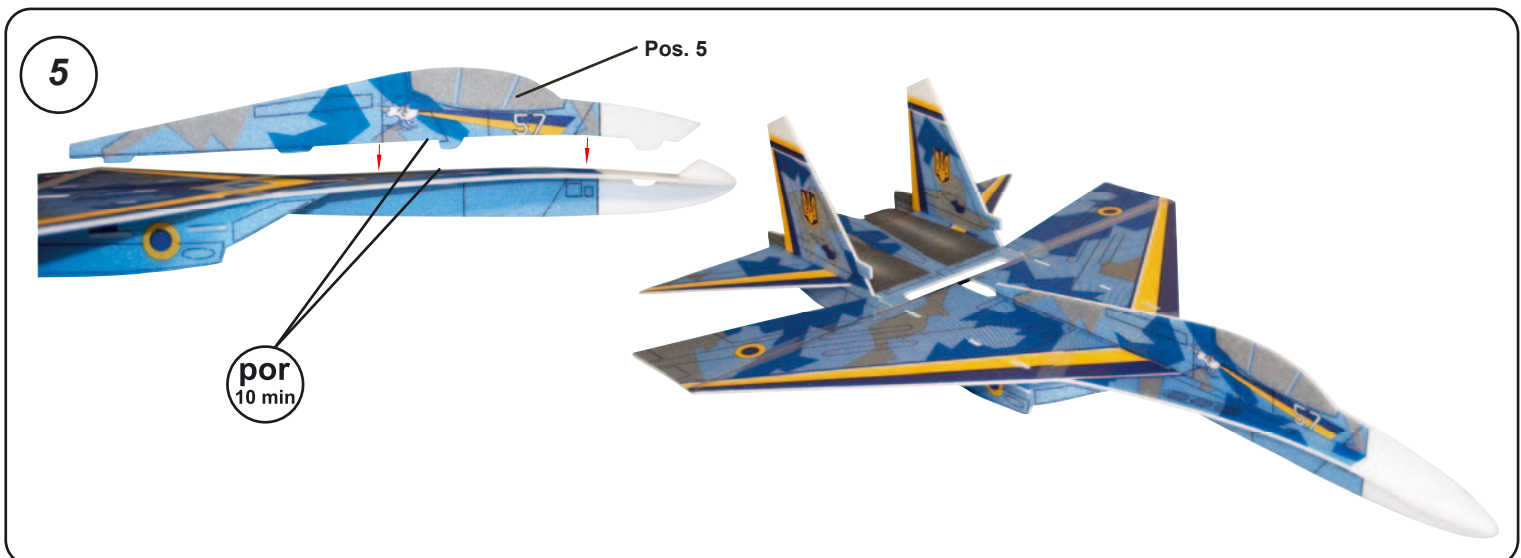
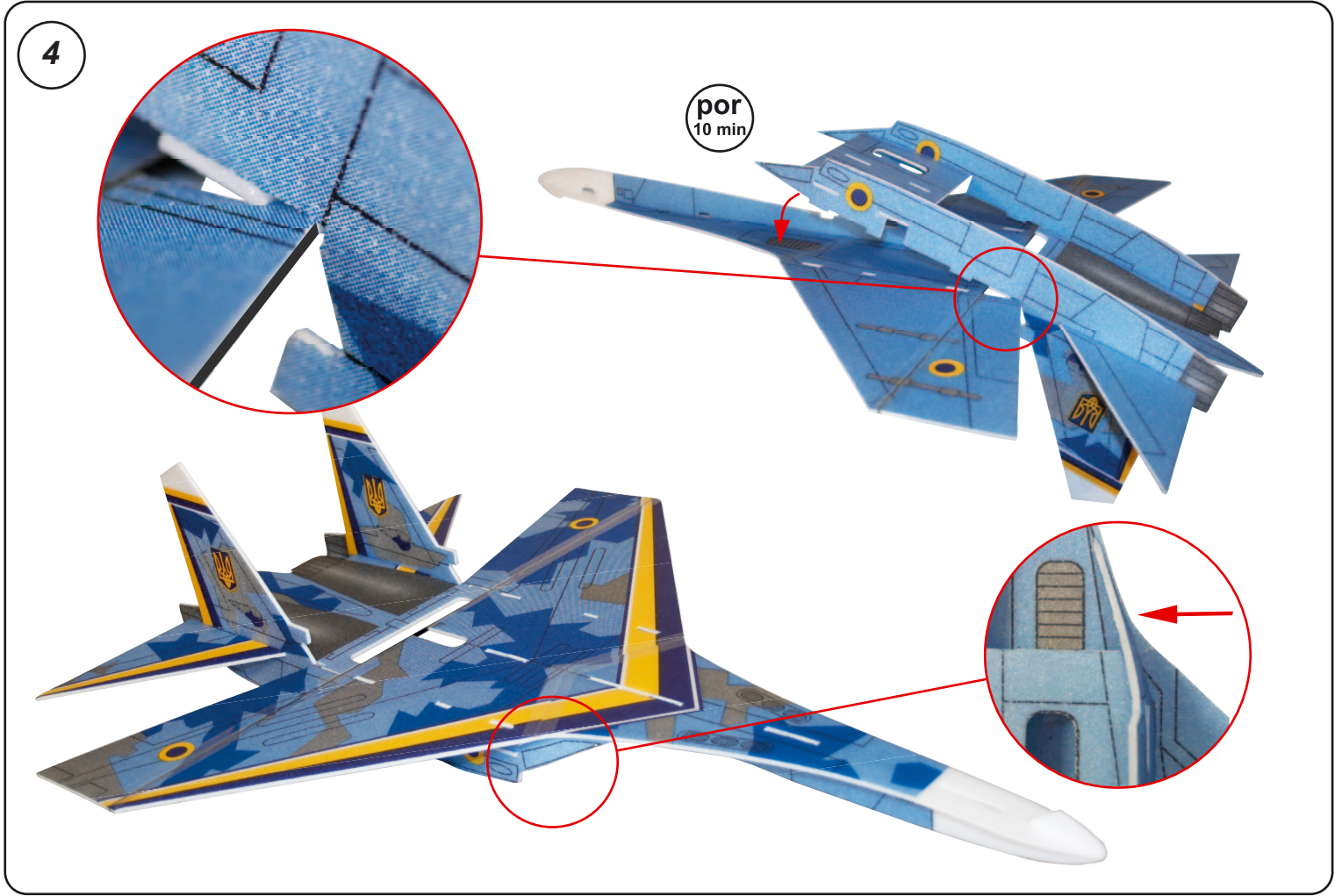
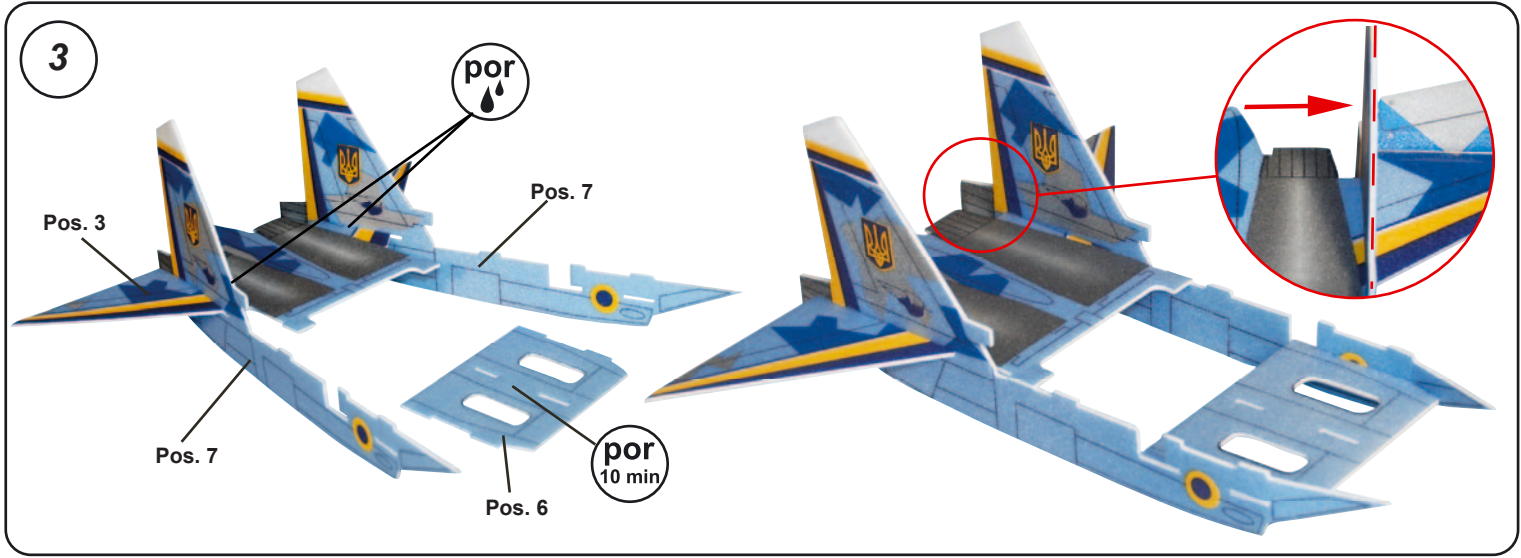
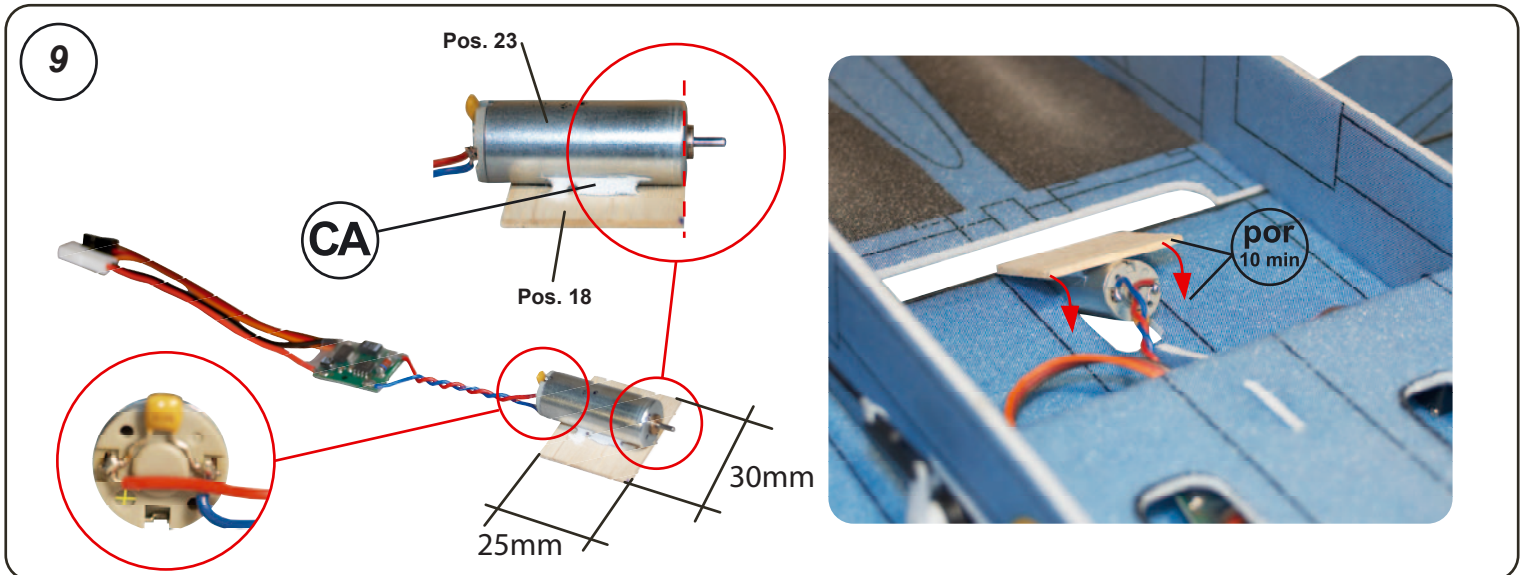
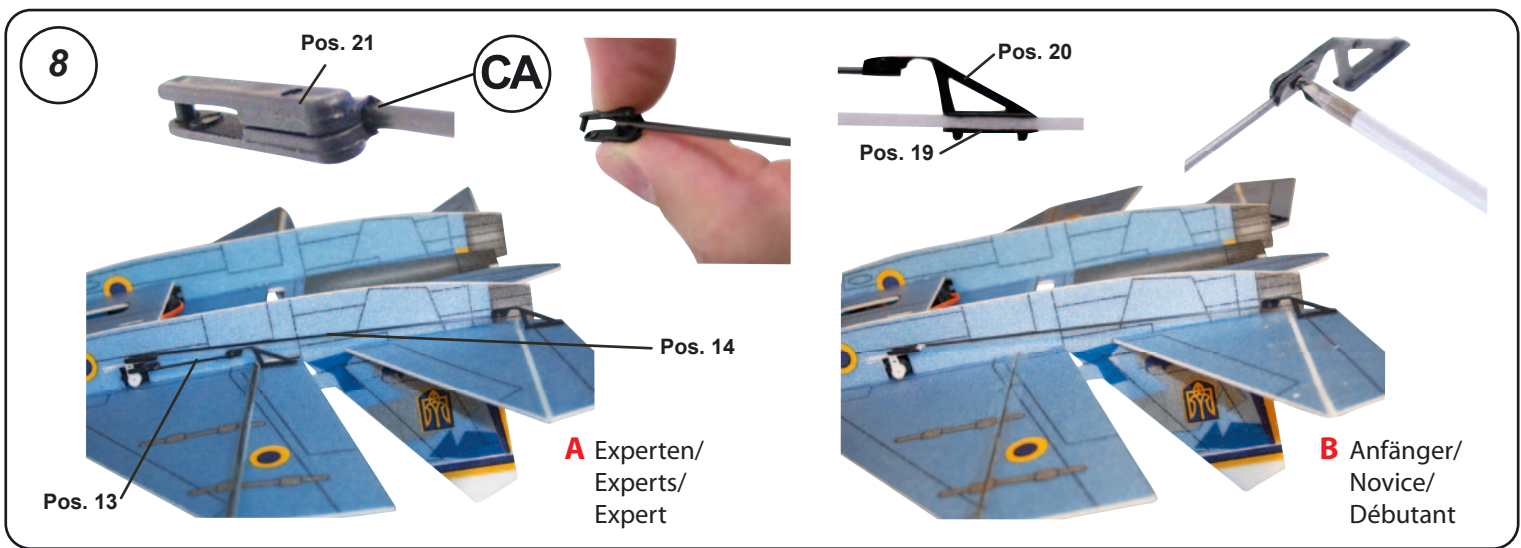
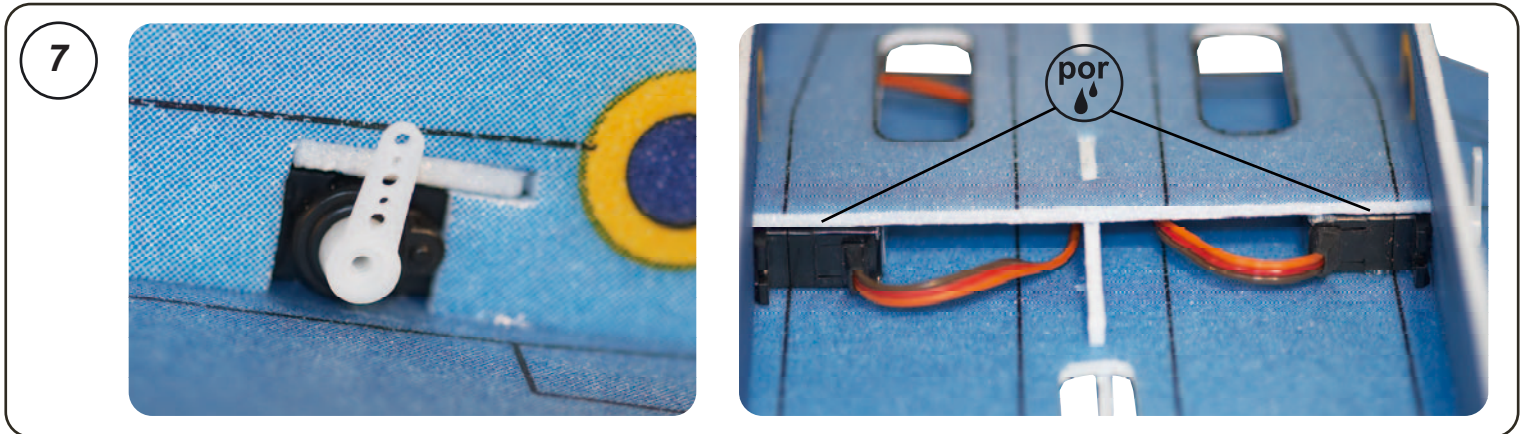
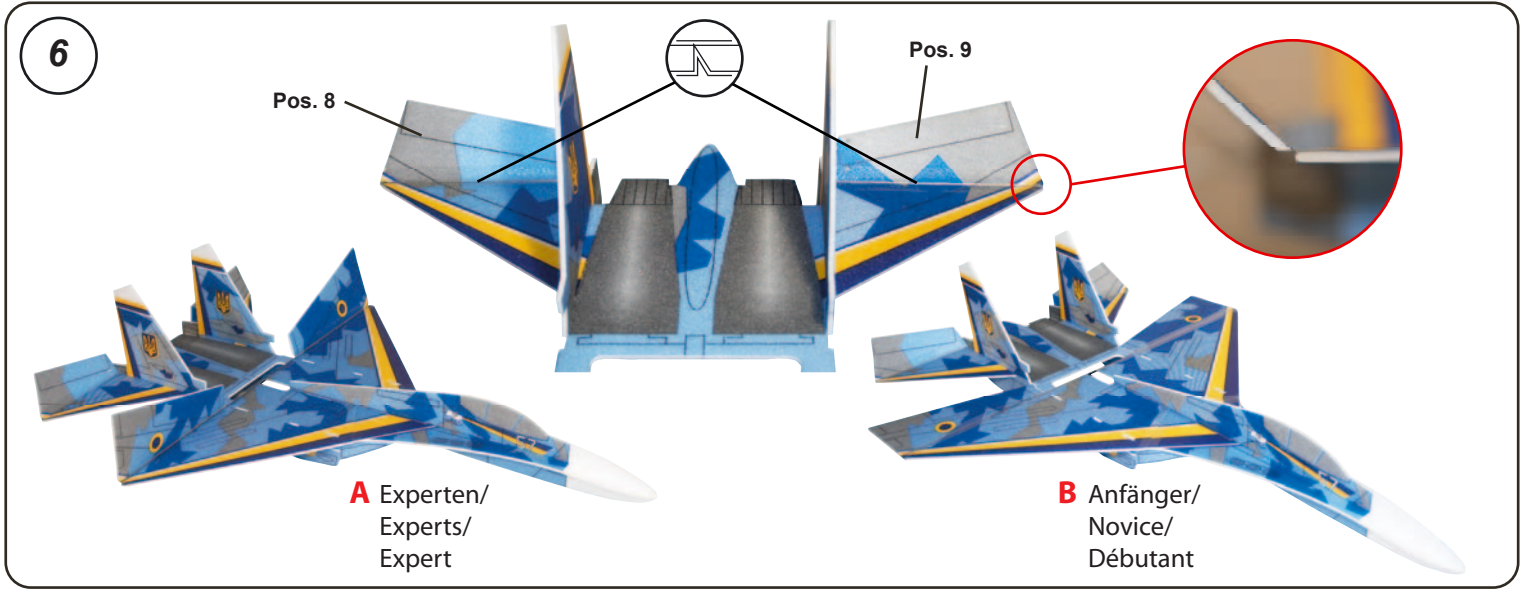


-  Markierung einzeichnen /  
Make marking /  
Marquage
-  Tesafilm /  
Clear Tape /  
Ruban adhésif
-  Mit scharfem Messer schneiden /  
Cut with a sharp knife (Exacto) /  
Utiliser un cutter
-  Kante mit Tesafilm umkleben /  
Seam the edges with clear tape /  
Recouvrir les bords avec du ruban adhésif
-  Mit CA-Kleber verkleben /  
Use CA-glue /  
Utiliser de la colle cyano
-  Mit Epoxy Harz verkleben /  
Use epoxy glue /  
Utiliser de la résine Epoxy
-  Mit **UHU por** ohne Ablüften verkleben /  
Use **UHU por** glue without drying /  
Utiliser colle **UHU por**
-  **UHU por** vor Zusammenbau 10 Min. ablüften lassen /  
Let **UHU por** dry for 10 min. before joining surfaces together /  
Utiliser colle **UHU por**. Laisser sécher 10 min. avant assemblage
-   Ruder 45° anschrägen / Sand rudder edge in 45° angle / Chanfreiner la gouverne à 45°
-  Ruder mit einem Tesastreifen befestigen / Attach rudder with clear tape / Fixer la gouverne sur le dessus avec du ruban adhésif
-  Anschließend von unten 3 kurze Tesastreifen zur Verstärkung anbringen / Reinforce from bottom with 3 short stripes of tape / Fixer la gouverne sur le dessous avec trois autres petits bouts de ruban adhésif

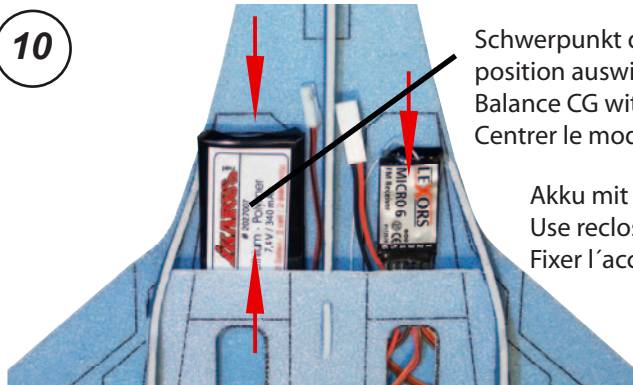






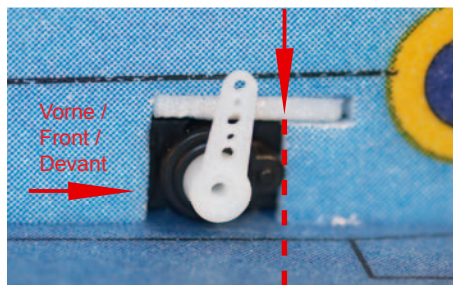
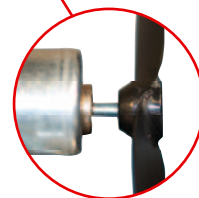


10



Schwerpunkt durch Akku-  
position auswiegen /  
Balance CG with battery /  
Centrer le modèle en déplaçant l'accu

Akku mit Klettband befestigen /  
Use reclosable fastener to secure battery /  
Fixer l'accu avec la bande Velcro



Schwerpunkt /  
CG position /  
Centre de gravité



#### Bausatzinhalt / Kit Contents / Contenu de la boîte de construction

| Pos./Part #/Pos. | Artikel Bezeichnung/Description/Désignation  | Stk./Qty./Qté. |
|------------------|--|----------------|
| 1                | Rumpfvorderteil / Front fuselage / Avant du fuselage   | 1              |
| 2                | Tragfläche / Wing / Aile   | 1              |
| 3                | Rumpfhinterteil / Rear fuselage / Arrière du fuselage  | 1              |
| 4                | Rumpfunterteil / Lower fuselage / Fuselage inférieur   | 1              |
| 5                | Rumpfberteil / Upper fuselage / Fuselage supérieur   | 1              |
| 6                | Rumpfboden / Bottom fuselage / Dessous de fuselage   | 1              |
| 7                | Rumpfs Seitenteile / Side fuselage / Flanc de fuselage   | 2              |
| 8                | Taileron rechts / Taileron right / Taileron droit  | 1              |
| 9                | Taileron links / Taileron left / Taileron gauche   | 1              |
| 10               | Querruder Rechts / Right aileron / Aileron droit   | 1              |
| 11               | Querruder Links / Left aileron / Aileron gauche  | 1              |
| 12               | Flächenholm CFK / Wing spar CRP / Longeron carbone 0,8x3x420mm                                       | 2              |
| 13               | QR-Gestänge / Aileron pushrod / Tringle de cde aileron Ø1,5x55 mm                                    | 2              |
| 14               | Taileron-Gestänge / Taileron pushrod / Tringle de cde taileron Ø1,5x200 mm                           | 2              |
| 15               | Schraube / Screw / Vis M1,4x3mm  | 4              |
| 16               | Klettband (Akkubefestigung) / Reclosable fastener (to secure battery) / Bande Velcro (fixation accu) | 1              |
| 17               | Klebstoff UHU por / UHU por glue / Colle UHU por   | 1              |
| 18               | Motorfixierung Balsa / Motor mount balsa / Fixation moteur balsa 25x30mm                             | 1              |
| 19               | Ruderhornclip / Rudder horn clevice / Clip de guignol  | 4              |
| 20               | Ruderhorn / Rudder horn / Guignol  | 4              |
| 21               | Gabelkopf / Clevice / Chape  | 4              |
| 22               | Tesafilm / Adhesive tape / Ruban adhésif   | 1              |
| 23               | Motor / Motor / Moteur   | 1              |
| 24               | Luftschaube / Propeller / Hélice   | 1              |

#### Erforderliches Zubehör / Necessary Accessories / Accessoires nécessaires:

| Best.Nr. / # / Réf. | Artikel-Bezeichnung / Item Description / Désignation  | Stk./Qty./Qté. |
|---------------------|---|----------------|
| 171201              | Lexors Servo 201 oder/or/ou                           | 2              |
| 171100              | Lexors Servo 100                                      | 2              |
| 160533              | Microregler / Micro Controller 2000 / Micro variateur | 1              |
| 173570              | Empfänger / Receiver / Récepteur 35 MHz               | 1              |
| 174070              | Empfänger / Receiver / Récepteur 40 MHz               | 1              |
| 177270              | Empfänger / Receiver / Récepteur 72 MHz               | 1              |

#### Antriebs Akku / Battery / Accus de propulsion

|         |   |   |
|---------|---|---|
| 2027007 | 2 Zellen LiPo 340 mAh / 2 cell LiPo 340 mAh / Li-Poly 7,4V, 340 mAh | 1 |
| 2027008 | 2 Zellen LiPo 720 mAh / 2 cell LiPo 720 mAh / Li-Poly 7,4V, 720 mAh | 1 |

**IKARUS**.net  
Norbert Grünjens

Im Webertal 22  
78713 Schramberg-Waldmössingen  
Bestelltelefon:  
++49 (0) 74 02 - 92 91-90  
Hotline: (1,24 €/Min.)  
++49 (0) 190 - 79 50 20  
Fax: ++49 (0) 74 02 - 92 91-50  
info@ikarus.net

**IKARUS**.net  
**USA**

5876 Enterprise Parkway  
Billy Creek Commerce Center  
Fort Myers, FL 33905  
Phone +1-239-690-0003  
Fax +1 -239-690-0028  
info@ikarus-usa.com

**IKARUS**.net  
**FRANCE**

19, Rue Desaix  
Strasbourg Nord  
67450 Mundolsheim  
Tél.: 03 88 18 11 11  
Fax : 03 88 18 11 17  
info@ikarus-france.com